



TWO-WHEEL TRACTORS

PowerSafe®



language



THE VERSATILITY OF BCS TWO-WHEEL TRACTORS POWERSAFE® ALLOWS OUR CUSTOMERS TO FULFIL ALL REQUIREMENTS PERTAINING TO SOIL WORKING, GARDENS' CARE, GREENS MAINTENANCE, INTER-ROW MOWING IN VINEYARDS AND ORCHARDS OR IN UNCULTIVATED AREAS AND DURING WINTER USE, ALL YEAR ROUND.

THANKS TO THEIR HANDLING AND EASE OF USE, THE BCS TWO-WHEEL TRACTORS POWERSAFE® ARE WELL PERFORMING ANY TYPE OF USE AND CAN BE USED BY A VAST RANGE OF USERS: FROM HOBBY TO PROFESSIONAL FARMERS, AND FROM INDIVIDUALS TO THE GREENERY CARETAKER. THE POWERSAFE® HYDRAULIC CLUTCH ALSO GUARANTEES MAXIMUM RELIABILITY, COMFORT AND TOTAL SAFETY FOR THE OPERATOR.

4 SEASONS SOLUTION



UNIQUE

SEVERAL ADVANTAGES MAKE THE BCS TWO-WHEEL TRACTORS POWERSAFE® EXCLUSIVE

M A D E I N I T A L Y

QUICK REVERSER

to change the forwarding direction.

PARKING BRAKE

as standard on all models.

DIFFERENTIAL WITH LOCK

for improved traction and manoeuvrability.

ENGINE COVER KIT

as optional to enhance the styling of the machine.

DRIVER'S POSITION

with handlebars, adjustable in height and sideways and reversible 180°, mounted on silent blocks to dampen vibrations.

INDEPENDENT POWER TAKE-OFF

with maintenance-free coupling in oil bath.

THE GEARS

run in oil bath, which guarantees long life and reliability.

STAGE V PROFESSIONAL ENGINES

featuring a high torque reserve assure they hold up even under the most difficult conditions and during prolonged use.

QUICK HITCHES

as optional for the replacement of the attachments without using any wrench.

POWERSAFE® HYDRAULIC CLUTCH

with multiple discs in oil bath.



PowerSafe®

THE POWERSAFE® CLUTCH WITH MULTIPLE STEEL DISCS IN OIL BATH AND DIRECTLY FLANGED TO THE ENGINE, PATENTED AND EXCLUSIVE TO THE BCS GROUP, GUARANTEES A NUMBER OF BENEFITS FOR THE OPERATOR, IN ADDITION TO MAKE BCS TWO-WHEEL TRACTORS CONFORMING TO THE SAFETY REGULATIONS EN 709/A4.



RELIABLE



SAFETY

Immediate machine and attachment shutdown if the handlebar is released. However, the engine continues to run.

Dual desmodromic system to prevent work from being resumed accidentally.



RELIABILITY

Maintenance-free hydraulic clutch.

Practically unlimited duration even if stressed with alternating movement attachments or with high inertia.



PERFORMANCE

No overheating even if stressed for a long time.

No drop in performance at any operating temperature.



COMFORT

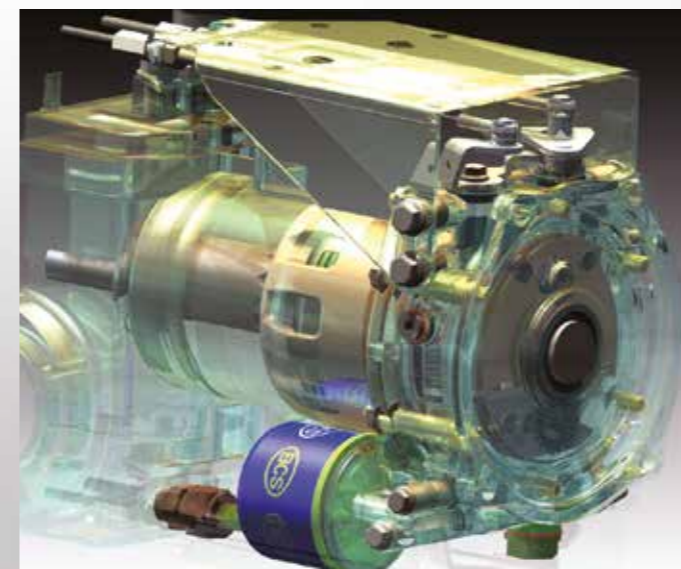
Gentle and progressive engagement of the clutch lever, as well as minimal force required to keep the safety lever pressed.

Elimination of preliminary action for engine start-up.



WARRANTY

Extended to 5 years on the entire PowerSafe® clutch unit.



RANGE

5 MODELS, AVAILABLE WITH MECHANICAL OR HYDROSTATIC TRANSMISSION AND WITH GASOLINE OR DIESEL ENGINES, FOR A TOTAL OF 24 DIFFERENT VERSIONS, EACH OF WHICH DESIGNED AND BUILT TO SATISFY THE PRECISE REQUIREMENTS OF OUR CUSTOMERS. ALL THE BCS TWO-WHEEL TRACTORS POWERSAFE® ARE FITTED WITH REVERSIBLE HANDLEBARS TO BE USED WITH BOTH FRONT AND REAR ATTACHMENTS.



728
Powersafe®



738
Powersafe®



770^{HY}
Powersafe®



740
Powersafe®



750
Powersafe®

728 PowerSafe®



GEARBOX 3 forward + 3 reverse speeds

QUICK REVERSER to change the forwarding direction

POWERSAFE® CLUTCH with multiple discs in oil bath

INDEPENDENT POWER TAKE-OFF with engagement in oil bath

PARKING BRAKE

HANDLEBAR mounted on silent-blocks, adjustable in height and sideways and reversible

SAFETY DEVICES complying with the applicable regulations

BCS ATTACHMENTS WHICH CAN BE MOUNTED: rotary hoe, ridger, plough, Groundblaster, cutter bar, lawn mower, BladeRunner, snow blade and turbine snow thrower, sweeper

GRAPH OF THE SPEEDS IN KM/H WITH WHEELS 4.0-10



Engine	Fuel	Starter	Power kW/HP
HONDA GP160 V	Gasoline	Recoil	3,6 / 4,8
HONDA GX200 V	Gasoline	Recoil	4,1 / 5,5
HONDA GX270 V	Gasoline	Recoil	6,3 / 8,6
BRIGGS&STRATTON XR1450 V	Gasoline	Recoil	7 / 9,5
KOHLER KD350 V	Diesel	Recoil	5,5 / 7,5



738 PowerSafe®

GEARBOX 3 forward + 3 reverse speeds

QUICK REVERSER to change the forwarding direction

DIFFERENTIAL with lock

POWERSAFE® CLUTCH with multiple discs in oil bath

INDEPENDENT POWER TAKE-OFF with engagement in oil bath

PARKING BRAKE

HANDLEBAR mounted on silent-blocks, adjustable in height and sideways and reversible

SAFETY DEVICES complying with the applicable regulations

BCS ATTACHMENTS WHICH CAN BE MOUNTED: rotary hoe, ridger, plough, Groundblaster, cutter bar, lawn mower, heavy duty mower, BladeRunner, RollerBlade, snow blade and turbine snow thrower, sweeper

GRAPH OF THE SPEEDS IN KM/H WITH WHEELS 5.0-10



Engine	Fuel	Starter	Power kW/HP
HONDA GX270 V	Gasoline	Recoil or electric	6,3 / 8,6
HONDA GX340 V	Gasoline	Recoil	8 / 10,7
BRIGGS&STRATTON XR1450 V	Gasoline	Recoil	7 / 9,5
KOHLER KD350 V	Diesel	Recoil or electric	5,5 / 7,5

740 PowerSafe®



GEARBOX 3 forward + 3 reverse speeds

QUICK REVERSER to change the forwarding direction

DIFFERENTIAL with lock

POWERSAFE® CLUTCH with multiple discs in oil bath

INDEPENDENT POWER TAKE-OFF with engagement in oil bath

INDEPENDENT WORKING BRAKES on the two wheels

PARKING BRAKE

HANDLEBAR mounted on silent-blocks, adjustable in height and sideways and reversible

SAFETY DEVICES complying with the applicable regulations

BCS ATTACHMENTS WHICH CAN BE MOUNTED: rotary hoe, ridger, plough, Groundblaster, cutter bar, lawn mower, heavy duty mower, BladeRunner, RollerBlade, snow blade and turbine snow thrower, sweeper

GRAPH OF THE SPEEDS IN KM/H WITH WHEELS 5.0-10



Engine	Fuel	Starter	Power kW/HP
HONDA GX390 V	Gasoline	Recoil or electric	8,7 / 11,7
BRIGGS&STRATTON XR2100 V	Gasoline	Recoil	8,4 / 11,5
YANMAR LV100	Diesel	Recoil or electric	7,5 / 10

750 PowerSafe®



GEARBOX 3 forward + 3 reverse speeds

QUICK REVERSER to change the forwarding direction

DIFFERENTIAL with lock

POWERSAFE® CLUTCH with multiple discs in oil bath

REINFORCED, INDEPENDENT POWER TAKE-OFF with engagement in oil bath

REDUCTION UNITS on the wheels

INDEPENDENT WORKING BRAKES on the two wheels

PARKING BRAKE

HANDLEBAR mounted on silent-blocks, adjustable in height and sideways and reversible

IMPLEMENT QUICK HITCH

SAFETY DEVICES complying with the applicable regulations

BCS ATTACHMENTS WHICH CAN BE MOUNTED: rotary hoe, ridger, plough, lawn mower, heavy duty mower, BladeRunner, RollerBlade, sweeper

GRAPH OF THE SPEEDS IN KM/H WITH WHEELS 6.5/80-12



Engine	Fuel	Starter	Power kW/HP
HONDA GX390 V	Gasoline	Recoil or electric	8,7 / 11,7
KOHLER KD440 V	Diesel	Recoil or electric	8 / 10,5

770HY

PowerSafe®

HYDROSTATIC TRANSMISSION with 2-speed ranges (slow/fast) in both forward and reverse drive

DIFFERENTIAL with lock

POWERSAFE® CLUTCH with multiple discs in oil bath

INDEPENDENT POWER TAKE-OFF with engagement in oil bath

INDEPENDENT WORKING BRAKES on the two wheels with cast iron drums

PARKING BRAKE

HANDLEBAR mounted on silent-blocks, adjustable in height and sideways and reversible

SAFETY DEVICES complying with the applicable regulations

BCS ATTACHMENTS WHICH CAN BE MOUNTED: rotary hoe, ridger, plough, Groundblaster, cutter bar, lawn mower, heavy duty mower, BladeRunner, RollerBlade, snow blade and turbine snow thrower, sweeper



Engine	Fuel	Starter	Power kW/HP
HONDA GX390 V	Gasoline	Recoil or electric	8,7 / 11,7
YANMAR LV100	Diesel	Recoil or electric	7,5 / 10

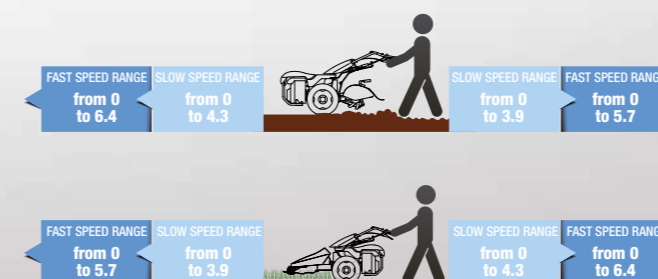
TWO-WHEEL TRACTOR WITH HYDROSTATIC FORWARD MOTION TRANSMISSION THAT CAN BE CONTINUOUSLY ADJUSTED WITH 2-SPEED RANGES.

WITH ONE LEVER ONLY ON THE HANDLEBAR, THE OPERATOR CAN CONTINUOUSLY VARY THE SPEED AND DIRECTION OF THE MACHINE: THIS MEANS AN UNLIMITED AMOUNT OF GEARS ARE AVAILABLE FOR ALL OPERATING REQUIREMENTS.

THE LEVER CONTROL ENSURES HIGH OPERATION COMFORT ESPECIALLY DURING GREENS MAINTENANCE, SNOW REMOVAL AND TYPICAL MUNICIPALITY USE, WHICH INVOLVES MANY DIRECTION CHANGES.

THE COMPACT HYDROSTATIC PUMP-ENGINE UNIT IS MADE OF LIGHT ALLOY SO THAT THE MACHINE CAN BE EASILY MANOEUVRED AND POSITIONED ON THE GEARBOX. CHARACTERISED BY A HIGH PRESSURE CIRCUIT WHICH IS SEPARATE FROM THE ONE OF THE POWERSAFE® CLUTCH, THE MACHINE IS FITTED WITH AN AXIAL-CENTRIFUGAL FAN TO COOL THE HYDROSTATIC UNIT.

GRAPH OF THE SPEEDS IN KM/H WITH WHEELS 5.0-10



ATTACHMENTS

BCS TWO-WHEEL TRACTORS POWERSAFE® CAN BE USED FOR DIFFERENT JOBS, AS WELL AS FOR CLASSIC TILLING. THE REVERSIBILITY OF THE HANDLEBARS, COMBINED WITH THE CORRECT RATIO BETWEEN THE FORWARD SPEEDS AND THE INDEPENDENT POWER TAKE-OFF SPEED, ENABLES ALL THE MODELS TO BE USED IN AN EXTREMELY PRACTICAL WAY WITH BOTH FRONT AND REAR ATTACHMENTS.

THE WIDE RANGE OF PROFESSIONAL AND GENUINE ATTACHMENTS MAKES BCS TWO-WHEEL TRACTORS POWERSAFE® INDISPENSABLE TOOLS FOR ALL SEASONS.



ROTARY HOE



USE

Soil working equipment in preparation for seeding, burial of plant residues, elimination of weeds, inter-row weeding for horticulture and floriculture.

AVAILABLE VERSIONS

Working width: 46 - 52 - 66 - 80 - 85 cm.

TECHNICAL FEATURES

- Minimum power required*: 3,5 kW (46 cm) - 4,5 kW (52 cm) - 5,5 kW (66 cm) - 7,5 kW (80 cm) - 8 kW (85 cm)
- Transmission with gears in oil bath
- Adjustable working depth (not available for 46-cm model)
- The tilling width can be adjusted by changing the numbers of knives and the width of the cover (not available for 46-cm model)
- Safety guard for operator's safety
- Optional: travel wheel, adjustable ridger (behind rotary hoe)

* data are approximate and refer to standard working conditions

PRECISION DEPTH ROLLER



USE

It allows to adjust with extreme precision the depth of penetration of the rotary hoe blades, minimizing the impact on the ground. Also it prepares the seed bed by gently compacting the top layer of the soil.

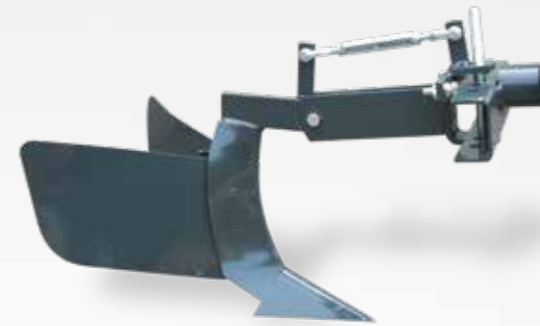
AVAILABLE VERSIONS

For rotary hoe with working width: 66 - 80 cm.

TECHNICAL FEATURES

- Adjustable working depth of the rotary hoe in different positions, from zero to the maximum tilling depth
- Steel roller with holes for surface treatment of the soil
- Roller supported by self-lubricating metal bushings

RIDGER



USE

Equipment to create a furrow in the previously tilled soil, to open small drainage ditches and to reinforce row crops.

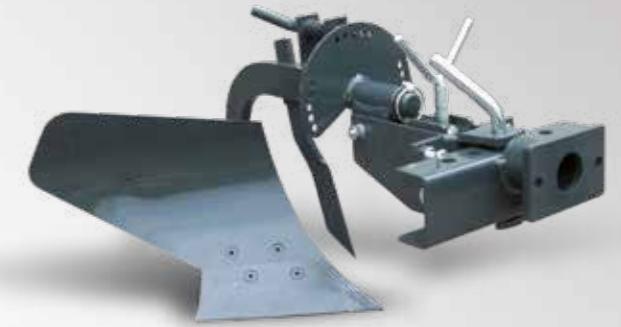
AVAILABLE VERSIONS

Adjustable ridger - Adjustable ridger behind rotary hoe.

TECHNICAL FEATURES

- Ridge depth adjustable by opening the mouldboards
- Max. width of the ridge: 385 mm (adjustable ridger) - 590 mm (adjustable ridger behind rotary hoe)
- Adjustable cutting angle of the single plough (only for adjustable ridger)
- Adjustable cutting depth of the plough (only for adjustable ridger)

PLOUGH



USE

Equipment to overturn and fragment the soil in preparation for further workings or directly for seeding. When overturning the soil, any weeds or previous crops are buried, speeding their decomposition.

AVAILABLE VERSIONS

Single-plough - 180° swivel plough.

TECHNICAL FEATURES

- Working width: 20 cm
- Adjustable ploughshare penetration depth
- Adjustable height of the knife
- Adjustable working angle

ROTARY PLOUGH GROUNDBLASTER



USE

Equipment for soil preparation for seeding, combining plough and rotary hoe in one single passage, elimination of weeds and tillage of small cultivation areas, creation of furrows, by performing multiple passages.

AVAILABLE VERSIONS

Single version - Swivel version.

TECHNICAL FEATURES

- Working width: 25 cm
- Minimum power required*: 6,3 kW
- Transmission with gears in oil bath
- Round safety guard for operator's safety
- Adjustable working depth by mean of a the support wheel
- Side sheet panel supplied to have ridge-free cultivation and to prevent any dropping of the soil onto the nearby fields (for single version only)
- Optional: 5-kg each overlapping weights (for single version only)

* data are approximate and refer to standard working conditions

RIDGER RIDGE 2



USE

Equipment for inter-row crops ridging and for clearing weeds from the soil, improving its permeability.

AVAILABLE VERSIONS

Standard Ridge 2 - Ridge 2 with extensions.

TECHNICAL FEATURES

- Plant inter-row spacing: 90 cm (standard) - 130 cm (with extensions)
- Minimum power required*: 5,5 kW
- Transmission with gears in oil bath
- Adjustable working depth by mean of the front wheel
- Adjustable working width by mean of the upper wings
- Optional: pair of extensions, 30-kg weight

* data are approximate and refer to standard working conditions

CUTTER BAR



USE

Equipment for cutting grass and forage without collection.

AVAILABLE VERSIONS

Laser® - with middle cut fingers - Duplex - Dual Laser® with standard or Elasto blade holders

Transmission in oil bath - Transmission in oil bath with double movement.

TECHNICAL FEATURES

- Cutting widths from 80 to 210 cm
- Skids for adjustment of the cutting height
- Full thickness screws in the molded and tempered steel blade support
- Blade coupling with reinforced tempered steel connection
- Self-adjusting blade-holders (for Duplex and Dual Laser® Elasto only)
- Optional: 12-kg weight

LAWN MOWER



USE

Grass cutting with collection in green areas, private and public parks, gardens and sports grounds.

AVAILABLE VERSIONS

56 cm single-blade - 100 cm with two blades.

TECHNICAL FEATURES

- Cutting width: 56 cm (single-blade) - 100 cm (with two blades)
- Minimum power required*: 3,6 kW (56-cm lawn mower) - 7,5 kW (100-cm lawn mower)
- Transmission with gears in oil bath
- Anti-dragging free wheel (for 100-cm lawn mower only) and automatic blade brake, according to the EN 12733 regulation
- Pivoting blades (for 100-cm lawn mower only)
- Adjustable front wheels for the horizontal adjustment of the cutting unit (for 100-cm lawn mower only)
- Adjustable cutting height (for 100-cm lawn mower only)
- Grass catcher: capacity 60 l (56-cm lawn mower) - 160 l (100-cm lawn mower)

* data are approximate and refer to standard working conditions

HEAVY DUTY MOWER



USE

Cutting and shredding of grass, bushes on green areas, rough grounds, undergrowth, uncultivated or industrial areas with discharge on the ground.

TECHNICAL FEATURES

- Single-blade heavy duty mower
- Cutting width: 80 cm
- Minimum power required*: 7 kW
- Automatic blade brake according to the EN 12733 regulation and anti-dragging free wheel
- Transmission with gears in oil bath
- Swinging axle
- Front and adjustable pivoting wheels for the horizontal adjustment of the cutting unit
- Adjustable cutting height

* data are approximate and refer to standard working conditions

HEAVY DUTY MOWER BLADERUNNER



USE

Implement to eliminate pruning residues or to control inter-rows weeds, heavy duty maintenance and clean-up from brambles, bushes and underbrush of uncultivated lands, forest undergrowth and rural parks.

AVAILABLE VERSIONS

Cutting width: 60 - 75 - 90 - 110 cm.

TECHNICAL FEATURES

- Single-rotor heavy duty mower with mobile Y-blades
- Minimum power required*: 5 kW (60 cm) - 6 kW (75 cm) - 7,5 kW (90 cm) - 8,5 kW (110 cm)
- Automatic blade brake according to the EN 12733 regulation and anti-dragging free wheel
- Main transmission with gears in oil bath and lateral transmission with belts
- Mobile front opening with canvas and protection bar
- Front pivoting wheels: they can be locked when working on slopes (for 90 and 110 cm models only)
- Adjustable cutting height
- Optional: lawn mowing blade kit, rear anti-scalp roller, 14-kg weight

* data are approximate and refer to standard working conditions

HEAVY DUTY MOWER ROLLERBLADE



USE

Implement to eliminate pruning residues or to control inter-rows weeds, heavy duty maintenance and clean-up from brambles, bushes and underbrush of uncultivated lands, forest undergrowth and rural parks also on slopes.

AVAILABLE VERSIONS

Cutting width: 75 - 90 cm.

TECHNICAL FEATURES

- Single-rotor heavy duty mower with mobile Y-blades
- Minimum power required*: 6 kW (75 cm) - 7,5 kW (90 cm)
- Automatic blade brake according to the EN 12733 regulation and anti-dragging free wheel
- Main transmission with gears in oil bath and lateral transmission with belts
- Front opening protected by mobile steel flaps
- Standard rear anti-scalp roller
- Adjustable cutting height
- Optional: lawn mowing blade kit

* data are approximate and refer to standard working conditions

SNOW BLADE



USE

Snow removal from any surface, gravel or sand handling.

TECHNICAL FEATURES

- Working width: 100 cm
- Steel structure
- Curved shape to facilitate the rolling of the snow
- Sideways adjustable, directly from the operator's seat
- Adjustable height above the ground
- Optional: 9-kg weight

TURBINE SNOW THROWER



USE

Snow removal from driveways, pavements and parking lots with collection and throw of dry, wet or frozen snow.

AVAILABLE VERSIONS

Working width: 60 - 70 cm.

TECHNICAL FEATURES

- Minimum power required*: 6,3 kW
- Transmission with gears in oil bath and cast iron housing
- Duct made of stainless steel and pivoting by 180° directly from the operator's seat
- Adjustable skids to set the ground clearance
- Safety pins to prevent damage to the impellers in case of impact
- Optional: balancing weight

* data are approximate and refer to standard working conditions

SWEeper



USE

Snow removal and cleaning of driveways, pavements, parking lots or barns.

AVAILABLE VERSIONS

Working width: 80 - 100 cm.

TECHNICAL FEATURES

- Minimum power required*: 6,3 kW
- Transmission with gears in oil bath and cast iron housing
- Brush: nylon or nylon and steel (for 100-cm model only)
- Sideways adjustable, directly from the operator's seat
- Adjustable cleaning height

* data are approximate and refer to standard working conditions

WHEELS



USE

Pneumatic or metal wheels with different profiles for various types of applications in agriculture, greens maintenance or haymaking.

AVAILABLE VERSIONS

With profil: Tractor - Lug Tyre - Terra Tyre - Garden - Steel cage.

TECHNICAL FEATURES

- Steel cage: agricultural use on very hard grounds. The crosspieces penetrate further into the ground, preventing the wheels from slipping
- Terra Tyre: used for greens maintenance and haymaking. The widened profile allows greater flotation and minimum soil compaction
- Lug Tyre: agricultural use. The clawed profile allows a good grip but with less soil compaction
- Garden: used for greens maintenance on quality surfaces. The low compaction profile protects the lawn
- Tractor: agricultural use. The clawed profile also allows a good grip on hard and soft grounds

POWERLUBE LUBRICANTS



USE

The original PowerLube lubricants are the only ones that guarantee both the hydraulic and mechanical components of the BCS two-wheel tractors PowerSafe® function properly and, at the same time, ensuring their perfect efficiency over time.

AVAILABLE VERSIONS

Hydromechanical transmission lubricant - Hydrostatic transmission and engine lubricant.

TECHNICAL FEATURES

- High quality synthetic bases and raw materials
- Formulated specifically for BCS two-wheel tractors

TECHNICAL FEATURES

	Engine	Fuel	Starter	Power kW/HP	Gearbox	Speeds FWD/REV	Quick reverser	Clutch	Brakes	Differential	PTO	Handlebars	Wheels	Safety devices
728 PowerSafe®	HONDA GP160 V	Gasoline	Recoil	3,6 / 4,8	With gears and worm screw in oil bath	3 + 3	Yes	PowerSafe®, hydraulic with manual control	Parking brake	No	Independent from gearbox. At 990 rpm (with engine at 3600 rpm) with engagement in oil bath	Mounted on silent-blocks, adjustable in height and sideways and reversible	4.00-8 4.0-10 6.5/80-12 Steel cage wheels Ø 43 cm	In compliance with the EN 709/A4 regulation
	HONDA GX200 V	Gasoline	Recoil	4,1 / 5,5										
	HONDA GX270 V	Gasoline	Recoil	6,3 / 8,6										
	BRIGGS&STRATTON XR1450 V	Gasoline	Recoil	7 / 9,5										
	KOHLER KD350 V	Diesel	Recoil	5,5 / 7,5										
738 PowerSafe®	HONDA GX270 V	Gasoline	Recoil or electric	6,3 / 8,6	With gears and worm screw in oil bath	3 + 3	Yes	PowerSafe®, hydraulic with manual control	Parking brake on the two wheels	With lock	Independent from gearbox. At 990 rpm (with engine at 3600 rpm) with engagement in oil bath	Mounted on silent-blocks, adjustable in height and sideways and reversible	5.0-10 6.5/80-12 Steel cage wheels Ø 43 cm	In compliance with the EN 709/A4 regulation
	HONDA GX340 V	Gasoline	Recoil	8 / 10,7										
	BRIGGS&STRATTON XR1450 V	Gasoline	Recoil	7 / 9,5										
	KOHLER KD350 V	Diesel	Recoil or electric	5,5 / 7,5										
740 PowerSafe®	HONDA GX390 V	Gasoline	Recoil or electric	8,7 / 11,7	With gears and worm screw in oil bath	3 + 3	Yes	PowerSafe®, hydraulic with manual control	Independent work brake on the two wheels and parking brake	With lock	Independent from gearbox. At 990 rpm (with engine at 3600 rpm) with engagement in oil bath	Mounted on silent-blocks, adjustable in height and sideways and reversible	5.0-10 6.5/80-12 Steel cage wheels Ø 49 cm	In compliance with the EN 709/A4 regulation
	BRIGGS&STRATTON XR2100 V	Gasoline	Recoil	8,4 / 11,5										
	YANMAR LV100	Diesel	Recoil or electric	7,5 / 10										
750 PowerSafe®	HONDA GX390 V	Gasoline	Recoil or electric	8,7 / 11,7	With gears and worm screw in oil bath	3 + 3	Yes	PowerSafe®, hydraulic with manual control	Independent work brake on the two wheels and parking brake	With lock	Independent from gearbox. At 990 rpm (with engine at 3600 rpm) with engagement in oil bath	Mounted on silent-blocks, adjustable in height and sideways and reversible	6.5/80-12 Steel cage wheels Ø 58 cm	In compliance with the EN 709/A4 regulation
	KOHLER KD440 V	Diesel	Recoil or electric	8 / 10,5										
770^{HY} PowerSafe®	HONDA GX390 V	Gasoline	Recoil or electric	8,7 / 11,7	With gears and worm screw in oil bath	2-speed ranges (slow/fast) in both FWD and REV	By hydrostatic unit	PowerSafe®, hydraulic with manual control	Independent work brake on the two wheels and parking brake	With lock	Independent from gearbox. At 990 rpm (with engine at 3600 rpm) with engagement in oil bath	Mounted on silent-blocks, adjustable in height and sideways and reversible	5.0-10 6.5/80-12 Steel cage wheels Ø 49 cm	In compliance with the EN 709/A4 regulation
	YANMAR LV100	Diesel	Recoil or electric	7,5 / 10										

THE SERVICES



SPARE PARTS

A complete range of original spare parts, guaranteed directly by the manufacturer.



ASSISTANCE

A team of specialists, well prepared and available to assure an efficient and resolving service.



WARRANTY

A precise certainty for the customer's satisfaction: 2-year warranty included in the price.



LUBRICANTS

We recommend to use the original PowerLube lubricants.



FINANCIAL SERVICES

Financial solutions to meet the credit requirements.



M A D E I N I T A L Y

